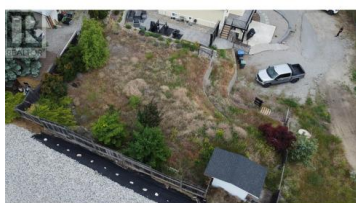




## 5493 SOLLY Road Summerland British Columbia

Lower Town

**\$337,700**

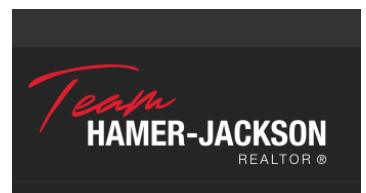


Stunning Lakeview Lot in Summerland! A rare opportunity to build your dream home in a quiet, established neighbourhood just steps from Okanagan Lake. Enjoy sweeping lake views from all three sides of your future home, with no building scheme or timeline to restrict your plans. This prime lot is fully serviced and offers unique flexibility—including the potential to build over 3,000 sq.ft. above grade (up to 2,154 sq.ft. without variance) thanks to a generous 0.45 FAR. A gently sloped easement provides space for extra parking, entertaining, or outdoor use. Walk to the beach, yacht club, pub, and coffee shop in minutes. Fruit stands, wineries, and Summerland's laid-back charm are all at your doorstep. Optional custom lake house plans—including a revenue suite—are available. Build your Okanagan lifestyle here—no GST, no restrictions, and endless potential. (id:6769)

### Graeme Veitch

Royal LePage Parkside Rlty Sml

Phone: (250) 462-1757



RE/MAX Kelowna  
100-1553 Harvey Avenue  
Kelowna, BC,  
Canada