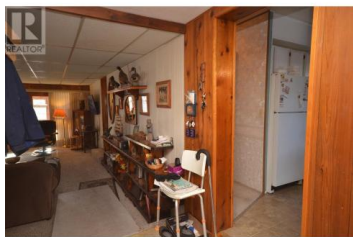


4137 Spallumcheen Drive 55 Armstrong British Columbia

Armstrong/ Spall.

\$159,900



#55 is nestled among trees in the very popular Palisades Mobile Park known for its friendly neighbours, peaceful, private treed lots & family oriented community. Located just ten minutes to Vernon & five minutes to Armstrong Palisades Park enjoys a rural atmosphere yet is convenient to amenities and shopping. This 2 bedroom unit enjoys a classic white kitchen & generous open plan living & dining room. Large windows allow natural light & let you enjoy the large naturally treed lot. An addition features a very spacious family room. Step through French doors to a gorgeous sun room overlooking a large, park-like back yard. Step onto the back deck for an evening BBQ or glass of wine. Retreat into the amazing shop featuring natural light, work benches, storage space and more. A second room has large windows & a third is great for storage. A covered wood shed & two more storage sheds allow space for summer or winter toys & garden equipment. Step comfortably from your car in a covered parking, space by the front door. There is room for two more vehicles. Delight in the large lot, gardens and walkways. Quiet location. (id:6769)

Donald Miller

Coldwell Banker Executives Realty

Phone: (250) 938-2100

<http://www.soldonvernon.ca/>



RE/MAX Kelowna
100-1553 Harvey Avenue
Kelowna, BC,
Canada

