

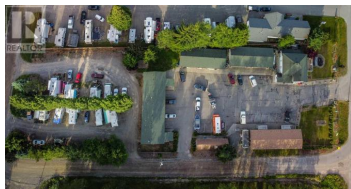


5510 16 Highway Terrace British Columbia

\$2,100,000



Well-established, 22-unit Motel & RV Park available. A good portion of the motel was built in 1997 to complement the original small scale motel. There are kitchenettes in each room, separate shower and laundry facilities which go nicely with the 10 RV spots (fully serviced: water/power/sewer) available. With frontage on the very busy Highway 16 West, there is easy access to both Prince Rupert and Kitimat, as well as minutes away from fishing, skiing, hiking and more. The large updated detached managers home was built in 2011. It's a spacious 2 story house that has 3 bedrooms and 2 bathrooms. This opportunity is the full package. * PREC - Personal Real Estate Corporation (id:6769)



Wendy Hadley

RE/MAX Coast Mountains

Phone: (250) 638-1400

<http://wendyhadley.ca/>



RE/MAX Kelowna
100-1553 Harvey Avenue
Kelowna, BC,
Canada