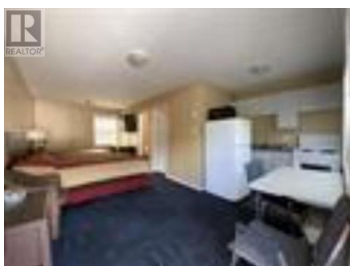
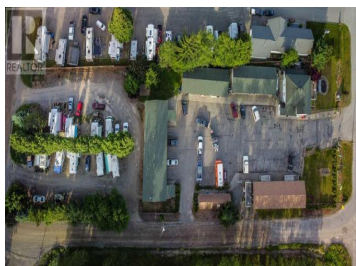


5510 16 Highway Terrace British Columbia

\$2,100,000



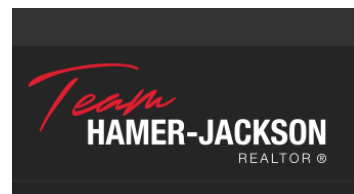
This well-established, 22-unit motel has a lot to offer. A good portion of the motel was built in 1997 to complement the existing smaller scale motel. There are kitchenettes in each room, separate shower and laundry facilities that go nicely with the 10 RV spots (fully serviced: water/power/sewer) available. With frontage on the very busy Highway 16 West, there is easy access to both Prince Rupert and Kitimat, as well as fishing, skiing, hiking and more. The large updated detached managers home was built in 2011. It's a spacious 2 story house that has 3 bedrooms and 2 bathrooms. A great business opportunity that is not to be passed by! * PREC - Personal Real Estate Corporation (id:6769)

Wendy Hadley

RE/MAX Coast Mountains

Phone: (250) 638-1400

<http://wendyhadley.ca/>



RE/MAX Kelowna
100-1553 Harvey Avenue
Kelowna, BC,
Canada