

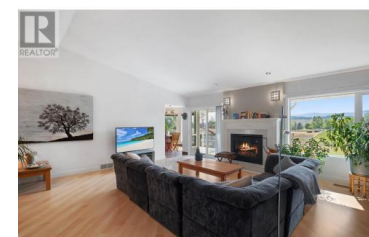


AIRPORT

## 5550 Rittich Road Kelowna British Columbia

Ellison

# \$2,795,000



Welcome to 5550 Rittich Road, a picturesque 10-acre farm located in the equestrian-friendly community of Ellison. This stunning property offers a unique opportunity to own a piece of land known for its rich soil, ideal for farming and agricultural pursuits. The entire farm is fully irrigated and serviced by GEID for both irrigation and domestic water, ensuring ample resources for all your needs. The property features a well-maintained and partially updated 4,521 square foot home, complete with a brand-new furnace and air conditioning system. Additionally, there is potential to build a secondary smaller home on the property, offering flexibility for extended family or rental income. Several outbuildings are included in this attractive farm package, such as a barn, animal shelter, workshop, and hay shed. The farm is fenced and cross-fenced with low-maintenance materials, making it ideal for horses, cattle, or any other livestock. This setup is perfect for those looking to pursue equestrian activities or a hobby that requires ample space. Currently operating as a small-scale cattle farm and hay business, this property offers money-making opportunities for the entrepreneurial spirit. Its prime location is just a 5-minute drive from Kelowna International Airport, UBCO, and Aberdeen Hall, providing convenience and accessibility. This is the first time this remarkable farm has been...



RE/MAX Kelowna  
100-1553 Harvey Avenue  
Kelowna, BC,  
Canada

**Jerry Geen**

RE/MAX Kelowna

Phone: (250) 878-6545

<http://www.geenbyrne.com/>

