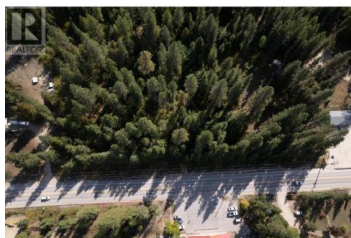
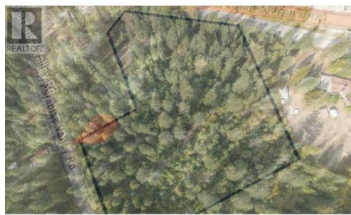


5728 PARADISE VALLEY Road Winlaw British Columbia

Passmore/Winlaw/Slocan

\$239,000



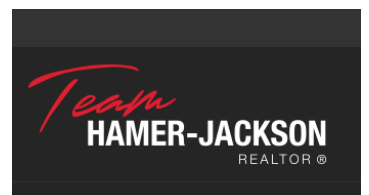
Discover 5728 Paradise Valley Road, an extraordinary property nestled in the heart of Winlaw. This remarkably flat land features a stunning forest ecosystem, offering a magical backdrop for your life in the valley. With dual access from both Highway 6 and Paradise Valley Road, this prime location presents limitless potential. Envision a thriving business or shop on the bustling main road, drawing in customers with excellent visibility, while the serene Paradise Valley Road provides a quiet and tranquil residential haven. This property is more than just land. With no zoning, it's a unique development opportunity, blending commercial potential with the beauty of nature. Whether you aspire to create a local business or your dream home, the possibilities here are endless. Winlaw is a vibrant community rich in outdoor activities and artistic culture, making it the perfect place to invest. Don't miss your chance to own this remarkable piece of paradise. Your vision awaits at 5728 Paradise Valley Road! (id:6769)

Tyson Alcock

eXp Realty

Phone: (250) 551-2869

<https://tysonalcock.exprealty.com/>



RE/MAX Kelowna
100-1553 Harvey Avenue
Kelowna, BC,
Canada