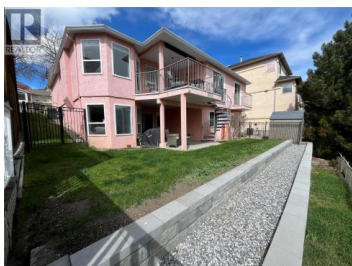




573 Spruceview Place Kelowna British Columbia

Glenmore

\$1,099,900



Beautiful 4-bedroom, 4-bathroom walk-out Glenmore rancher with panoramic valley views. Ideally located near parks, hiking trails, schools, and restaurants, this home offers both comfort and convenience. The bright, open-concept kitchen is the heart of the home, flowing seamlessly into the living and dining areas with direct access out to the upper balcony, where you can enjoy peaceful views of Dilworth Mountain. Numerous upgrades have been completed throughout, including A/C installed in August 2022, improved landscaping and irrigation, central vacuum, and more. The downstairs 2-bedroom, 2-bathroom suite features a spacious kitchen, upgraded flooring, electrical, and lighting, along with a custom high-efficiency gas fireplace. Don't miss this opportunity! (id:6769)

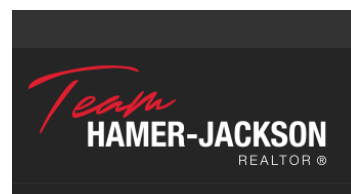


Sam Paquette

Royal LePage Kelowna Paquette Realty

Phone: (250) 899-5593

<https://royalpagekelownapr.ca/>



RE/MAX Kelowna
100-1553 Harvey Avenue
Kelowna, BC,
Canada