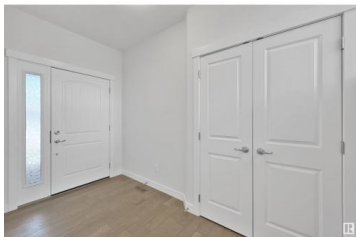
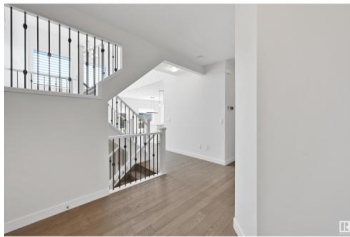




Edmonton Alberta

Keswick Area

\$788,800



Welcome to Keswick on the River! Beautifully upgraded Parkwood home offers almost 2,400 sf of luxury living space. Terrific location close to ravine trails & ponds. Vaulted ceilings & soaring windows fills this gorgeous home w/natural light. Open concept living room is perfect for entertaining. Dining & a sleek white kitchen expand into this space for the perfect area to host friends & family. Kitchen boasts S/S appliances, gas range, cabinetry w/42" uppers, pot drawers & quartz island. Main floor complete w/den, 2 pc powder room, sizeable mudrm/laundry & walk through pantry. A huge primary suite w/ spa-like ensuite w/a separate soaker, 4 ft shower & W/I closet. 2 more bedrms & a 4pc bathrm & vaulted bonus rm complete the upper level. Full & open basement ready for your personal touches. Features include wide plank engineered H/W, iron railings & custom blinds. Private south yard.O/S dbl garage w/drain. Move in ready- Like NEW! Close to schools, shopping, cafes & Windermere Currents. QUICK POSSESSION (id:6769)

Alan H. Gee

RE/MAX Elite

Phone: (780) 498-2187

<http://www.alangee.com/>



RE/MAX Kelowna
100-1553 Harvey Avenue
Kelowna, BC,
Canada