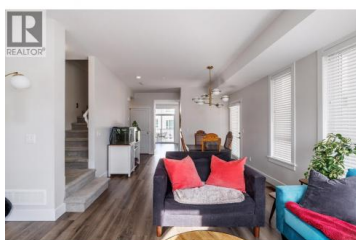


13098 Shoreline Way 58 Lake Country British Columbia

Lake Country North West

\$634,000



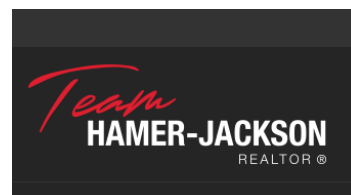
Welcome to one of the largest floor plans in Apex at The Lakes--this bright corner-unit townhome offers 4 bedrooms and 4 bathrooms with a functional, versatile layout. The main level features an open living space and a stylish kitchen with quartz countertops, stainless steel appliances, and a natural gas stove. Step onto the balcony with gas BBQ hookup or enjoy the back deck and lower patio--ideal for outdoor living and entertaining. Upstairs offers 3 bedrooms, including the primary with an ensuite, while the lower level features a 4th bedroom with a Jack-and-Jill ensuite--perfect for guests, a home office, or flex space. All bathrooms include quartz countertops, and added stairwell lighting enhances the home's appeal. Additional features include Whirlpool washer/dryer, central vac and security rough-ins, exterior water access, an extra wide one car garage with driveway parking, and an efficient geothermal system. Steps to Shoreline Park and close to shopping, wineries, hiking, biking, and golf--this is Okanagan living at its best. (id:6769)

Petrina Owen

Royal LePage Kelowna

Phone: (250) 826-5660

<http://www.petrina.ca/>



RE/MAX Kelowna
100-1553 Harvey Avenue
Kelowna, BC,
Canada