

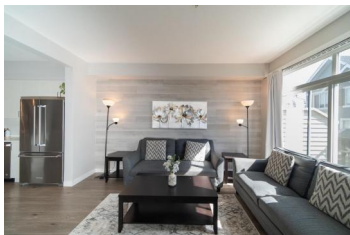
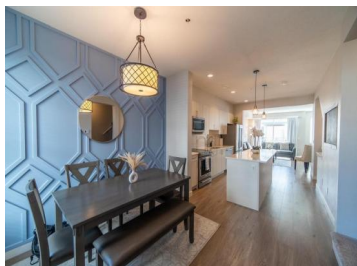


7169 208A 58 Langley British Columbia

\$779,000



Don't pass up the opportunity to call this home! This Lattice at Milner Heights townhouse is a perfect example of classic West Coast craftsman design. With stainless steel appliances, quartz countertops, a tiled backsplash, and a roomy island ideal for entertaining, the open-concept design has a chef-inspired kitchen. The cozy living room opens to a sunny deck and has an electric fireplace with a handmade mantel. The master bedroom, located upstairs, has a walk-in closet and an en suite bathroom with a big shower and twin sinks. You can use the lower level flex room for a room or office space, and the garage can accommodate additional storage. Located in a neighbourhood that is ideal for families, this house is close to stores, parks, schools, and public transportation. (id:6769)

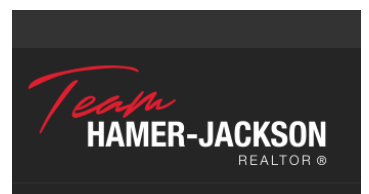


Daksh Bassi

SRS Panorama Realty

Phone: (778) 319-0014

<http://www.srsrealestate.com/>



RE/MAX Kelowna
100-1553 Harvey Avenue
Kelowna, BC,
Canada