



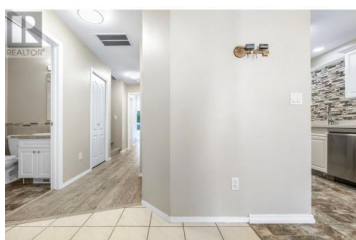
1120 Guisachan Road 6 Kelowna British Columbia

Springfield/Spall

\$625,000



Welcome to Aberdeen Estates in the mission area, where you can walk to shopping, schools and parks, all amenities just minutes away. Great 3 bedroom/ 3 bathroom floor plan with the master and laundry on main floor, 4 piece ensuite in the master. Newer appliances in the updated kitchen, 2 large bedrooms upstairs along with a full bathroom. Sliding doors to the outside living space, nice gas fireplace to keep the living room nice and cozy. Built In vacuum system, EV charger in the single garage and an additional parking space outside. The complex is family and pet friendly and has a clubhouse to entertain and a playground for the kids. Guest parking is available, and there is a starbucks /deli/ strip mall right across the street. New furnace and A/C unit. Call your realtor today to view this one. (id:6769)



David Beeson

Royal LePage Kelowna

Phone: (250) 575-2065

<http://www.davebeeson.ca/>



RE/MAX Kelowna
100-1553 Harvey Avenue
Kelowna, BC,
Canada