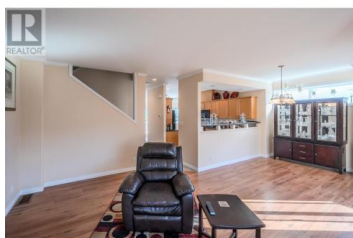
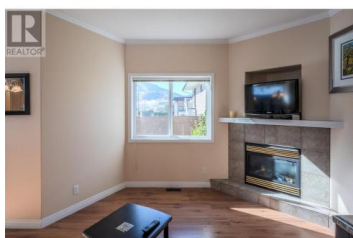
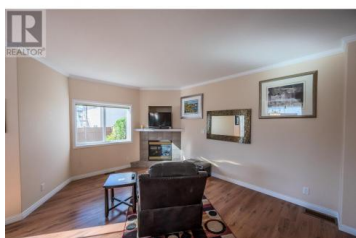




## 148 Roy Avenue 6 Penticton British Columbia

Main South

# \$599,000



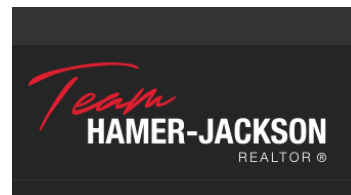
Bright end unit with double garage in Royal Gate. These Executive townhomes are rarely offered for sale, this sharply priced unit is ready to sell! Quick possession is available. The unit is immaculately maintained. Fantastic central location, in a quiet neighborhood walking distance to shopping, transit and schools! Every detail has been accounted for from the 9' ceilings to the solid surface floors throughout the main level, appliances, eating nook right off of the kitchen. The flow into the dining/living room is perfect for entertaining and has crown molding, a gas f/p, large windows, and a set of patio doors leading to the private fully fenced backyard. The back yard is perfect for BBQ's or a place for a small pet or two and has a low maintenance fenced yard. Measurement's taken from the strata plan. Buyer to verify if important. (id:6769)

### Scott Rowlands

Royal LePage Locations West

Phone: (250) 487-8944

<http://www.scottrowlands.ca/>



**RE/MAX Kelowna**  
 100-1553 Harvey Avenue  
 Kelowna, BC,  
 Canada