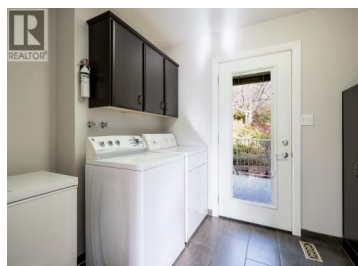


17017 Snow Avenue 6 Summerland British Columbia

Summerland Rural

\$425,000



This beautifully updated residence in Sherwood Park, Summerland offers exceptional value. The two-storey split design includes two bedrooms plus a den, two bathrooms, and generous living areas. Laundry facilities are conveniently located on the main level, providing access to the patio and backyard. The front deck adjoins the kitchen and dining area, enhancing both functionality and comfort. The home features freshly painted interiors and refaced cabinetry. Additional amenities include a single-car garage with ample storage and open parking for two vehicles. The low-maintenance landscaping and synthetic back lawn contribute to ease of upkeep. Residents also benefit from a community center within the development, fostering opportunities for social interaction. To arrange a private viewing, please contact us at your earliest convenience. All appliances are included plus a Deep Freezer and a Gas Barbecue. Please note that this home has been frame built on site and is NOT a mobile or manufactured home. Pets welcome with some restrictions. Measurements taken from the iGuide. (id:6769)

Tammy Antrobus

Fair Realty (Kelowna)

Phone: (250) 488-0804

<https://www.tammyantrobus.com/w>

hy-choose-tammy



RE/MAX Kelowna
100-1553 Harvey Avenue
Kelowna, BC,
Canada