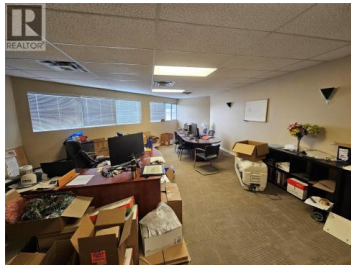


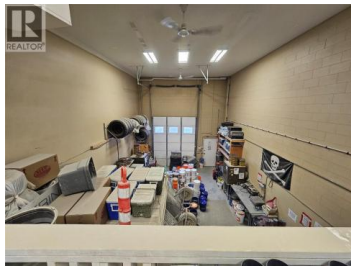
## 1905 Evergreen Court 6 Kelowna British Columbia

Springfield/Spall

# \$16



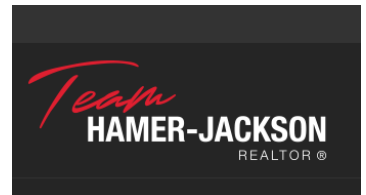
1,447 sq. ft. main floor commercial unit featuring 856 sq. ft. of shop space and 591 sq. ft. of showroom/office. Shop includes a 10' x 12' overhead door with rear access and parking. Forced air gas heat in the shop; heating and A/C in the office. In-suite washroom and kitchenette. Client parking at the front of the building. A functional, move-in ready space zoned I1 industrial. Sublease term until December 31, 2028. Available for occupancy August/September 2026. (id:6769)



**Stewart Dunbar**

Coldwell Banker Horizon Realty

Phone: (250) 718-8775



RE/MAX Kelowna  
100-1553 Harvey Avenue  
Kelowna, BC,  
Canada