



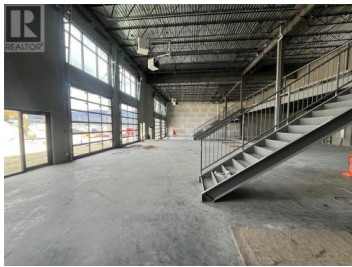
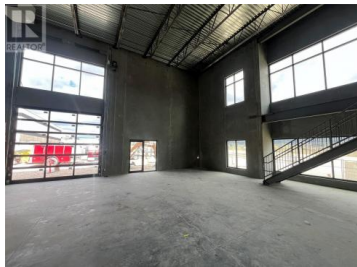
1990 Pier Mac Way 6. Kelowna British Columbia

University District

\$15



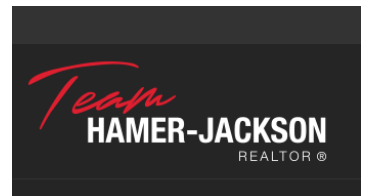
Airport Business Park's newest development for lease at an attractive lease rate of \$15 per sq. ft. Located at 1990 Pier Mac Way, this 16,000 sq. ft. energy-efficient building showcases a timeless, modern architectural design with high-quality materials. Building highlights include concrete tilt-up panels, abundant glazing for natural light, exclusive grade loading per unit, high-bay LED lighting, 3-phase power, beautiful landscaping, and on-site parking. Unit 6 offers 1,510 sq. ft. on the ground floor with a 600 sq. ft. mezzanine for a total of 2,110 sq. ft. All units are separately metered and ready for occupancy. (id:6769)



Noel Acres

Venture Realty Corp.

Phone: (250) 826-6635



RE/MAX Kelowna
100-1553 Harvey Avenue
Kelowna, BC,
Canada