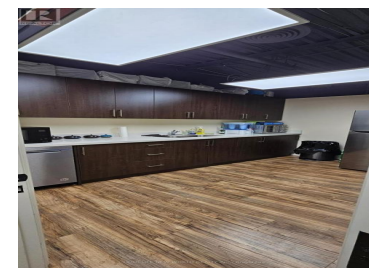
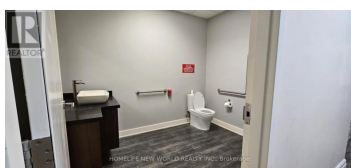




245 West Beaver Creek Road 6 Richmond Hill Beaver Creek Business Park Ontario

Beaver Creek Business Park

\$2,999,000

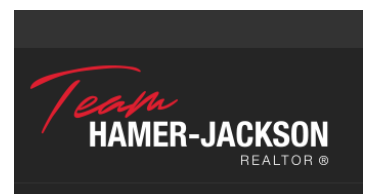


Main Street Exposure to West Beaver Creek Rd. Office (including main floor & mezzanine) about 3369 Sq Feet. Warehouse about 2431 sq ft. Separate Entrance from the front to the mezzanine. Another access to the mezzanine from the warehouse. Warehouse, main floor office and mezzanine have designated washing rooms. Lunch rooms within both the main floor office and mezzanine. 18' H & 30'6" W in the warehouse with a loading dock. Hydro 600V 100A. MC-1 Zone. Permitted Usage attached. Watch the warehouse floor. Special attention to bolts extending out of the floor surface and marked with red tape. All numbers for reference only, without representation or warranty, and to be verified by the buyer or its agents. Condo fee for the year of 2024. Also for Lease MLS#N12331477. (id:6769)

ZACK ZENG

HOMELIFE NEW WORLD REALTY INC.

Phone: (416) 490-1177



RE/MAX Kelowna
100-1553 Harvey Avenue
Kelowna, BC,
Canada