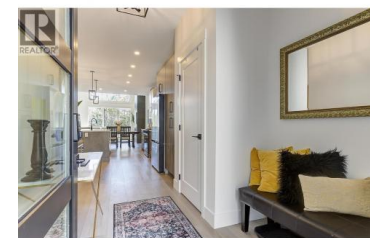
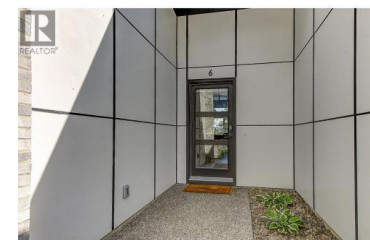
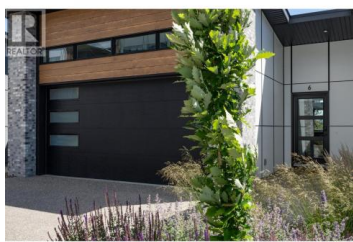




## 2835 Canyon Crest Drive 6 West Kelowna British Columbia

Shannon Lake

# \$925,000



Like-new rancher walkout in Tallus Ridge's newest development, Edge View. Perched on the hillside overlooking Shannon Lake, this main-level living townhome offers the perfect blend of spacious living and low-maintenance convenience. Built in 2024 to exceptional energy-efficiency and soundproofing standards, this home features a Step 4 Energy Rating and Logix ICF concrete common walls for superior comfort and performance. The main floor showcases a beautifully appointed kitchen with quartz countertops, a gas cooktop, under-cabinet lighting, and ample storage. The bright living room features vaulted ceilings, a cozy gas fireplace, and large windows that fill the space with natural light. Step outside to the expansive covered deck and enjoy views of Shannon Lake, the surrounding mountains, and mature trees. The spacious primary suite offers a luxurious 5-piece ensuite with heated floors, a soaker tub, and a walk-in closet complete with custom California Closets cabinetry. The walkout lower level is ideal for entertaining, featuring a large family room that opens to a fully fenced backyard with additional lake views and excellent privacy. Two additional bedrooms and a versatile recreation room with custom walk-in storage/closet space complete the lower level. Parking is effortless with a full double garage and an oversized driveway capable of accommodating two large trucks. This...



**RE/MAX Kelowna**  
 100-1553 Harvey Avenue  
 Kelowna, BC,  
 Canada

**Nehemiah Daehn**

Coldwell Banker Horizon Realty

Phone: (250) 575-4138

