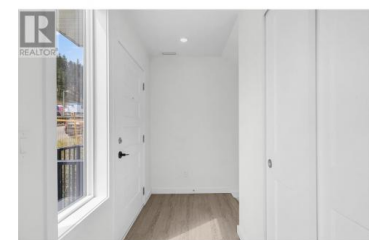


685 BOYNTON Place 6 Kelowna British Columbia

Glenmore

\$524,880



MOVE-IN READY! This stunning 1,023 SQ FT (BC Assessment) 2 BED, 2.5 BATH townhome with a DOUBLE GARAGE is located in the highly sought-after PROMONTORY development--ideal for FIRST-TIME BUYERS or INVESTORS. Built in 2023, it features IN-SUITE LAUNDRY and HAKAI ENERGY SOLUTIONS SOLAR PANELS with SMART APP monitoring and a 25-YEAR WARRANTY. Enjoy modern, efficient living just steps from KNOX MOUNTAIN PARK, KATHLEEN LAKE, GLENMORE RIDGE TRAILS, and multiple GREENWAYS. Only minutes to DOWNTOWN KELOWNA, RESTAURANTS, WINERIES, OKANAGAN LAKE, and all AMENITIES. PET-FRIENDLY: 2 dogs or 2 cats, or 1 dog & 1 cat allowed. RENTALS PERMITTED. QUICK POSSESSION available! (id:6769)

Deep Dhillon

Real Broker B.C. Ltd

Phone: (778) 955-7718



RE/MAX Kelowna
100-1553 Harvey Avenue
Kelowna, BC,
Canada