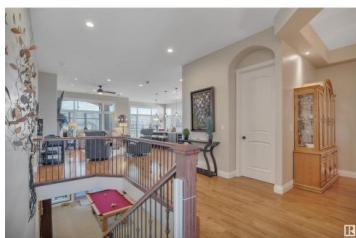
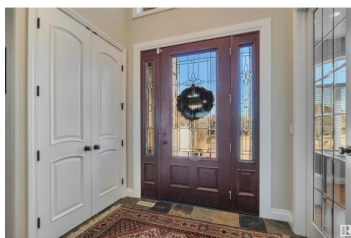


Leduc Alberta

Bridgeport

\$1,100,000



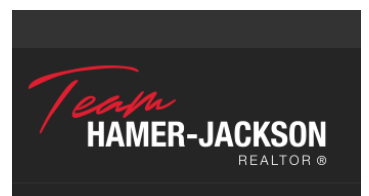
EXECUTIVE BUNGALOW! TRIPLE GARAGE! STUNNING POND VIEWS! WALKOUT BASEMENT! This 1910 sq ft 4 bed + office, 2.5 bath DIAMOND on the SHORES shows a 10! Exceptionally constructed by Kerrland Homes, it unites tasteful, timeless design with quality finishings & function. Feat: 10' ceilings on the main, stunning kitchen w/ luxury quartz countertop & backsplash, Bosch appliances, gleaming hardwood & tile on the main, gas fireplace w/ stone surround, 5 pce ensuite w/ elegant steam shower, in floor heat in basement, aggregate concrete front driveway & back walkout patio, irrigation system, screened in balcony w/ massive maintenance free deck, 8' garage doors w/ radiant heater, & more! Grand entryway leads to your open concept main floor; tons of windows for ample natural light! Primary bedroom + office on the main w/ 3 bedrooms downstairs. Ideal basement for family gatherings, w/ wet bar. Serene southwest pond views across Shores Lake create lasting memories! Impeccably landscaped w/ greenery & stone. A must see! (id:6769)

Kevin B. Doyle

RE/MAX Elite

Phone: (780) 314-8001

<http://kevindoyle.remax.ca/>



RE/MAX Kelowna
100-1553 Harvey Avenue
Kelowna, BC,
Canada