



602 Trumpeter Road Kelowna British Columbia

Kettle Valley

\$1,199,000



Incredible opportunity to obtain this expansive 2.86 acre building lot with lake views, and backing on to endless green space. Stratification potential to create 3 large single family sites, or keep it as an estate site to construct your dream home, with the ability to add a carriage house, etc. Fully serviced at lot line. Located in the desirable neighbourhood of Kettle Valley, and close proximity to newly developed shopping and services, including grocery and more. Don't miss this amazing property. (id:6769)

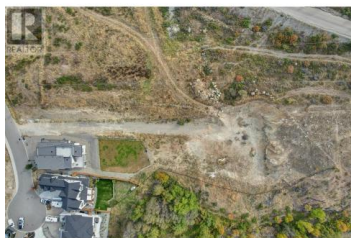


Geoff Hall

Angell Hasman & Assoc Realty Ltd.

Phone: (250) 575-4292

<https://hallcassie.com/>



RE/MAX Kelowna
100-1553 Harvey Avenue
Kelowna, BC,
Canada