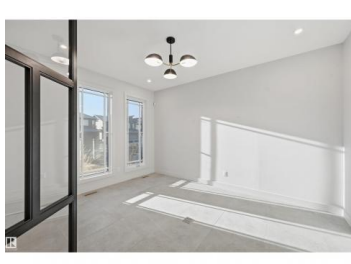
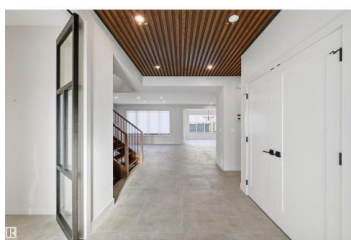
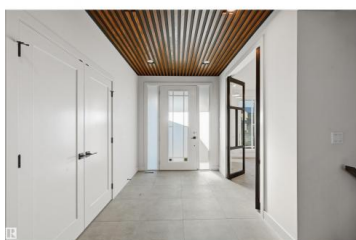
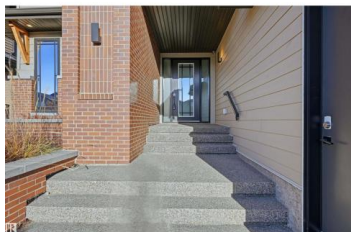




Edmonton Alberta

Chappelle Area

\$1,125,000



Welcome home to this luxury, quality & well-designed residence. A former lottery showhome just steps to Jagare Ridge Golf Course. This impressive 2-storey offers nearly 4,700sf of total living space on 3 levels. The main floor showcases an open layout w/custom millwork, feature walls & a chef's kitchen with upgraded built-in appliances, Dekton counters & walk-through butler's pantry. Large dining nook framed by a stunning wall of windows. Great room will accommodate any furniture arrangement. A private office, powder room and thoughtfully designed mudroom w/built ins complete this main level. Upstairs, the luxurious primary suite features an expansive walk-in closet and 5pc grand ensuite, 2 additional bedrooms & 4pc bathroom for a growing family. Bonus room offers dual living areas. Fully finished basement includes a rec room, games area & wetbar. 4th bedroom, full bathroom & storage for extended guest stays. Notable mentions: Central A/C, automated blinds, heated triple garage. Designer touches throughout (id:6769)

Alan H. Gee

RE/MAX Elite

Phone: (780) 498-2187

<http://www.alangee.com/>



RE/MAX Kelowna
100-1553 Harvey Avenue
Kelowna, BC,
Canada