

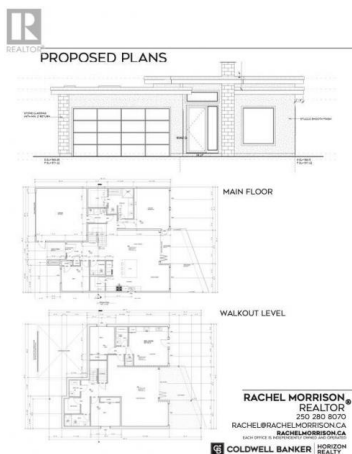
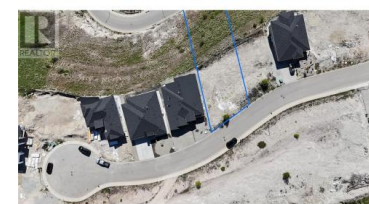
## 6042 Gerrie Road Peachland British Columbia

Peachland

# \$447,000



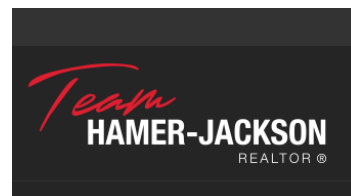
Limitless views to Kelowna and Penticton. Gerrie Road is a new, fully serviced community, perched on the South Facing hillside of Peachland. This lot offers a 60' width, is ready to build on with services at the lot line and provides commanding south facing views. Peachland sits geographically in the dead center of the Okanagan; 10 minutes to West Kelowna, 40 minutes to Penticton, and 45 minutes to Kelowna International Airport. Minutes' drive to downtown Peachland, shops, restaurants, medical services, and a 5km public waterfront promenade. Gerrie Road truly provides the best the Okanagan has to offer. Only a few lots remain in this highly sought after community. Don't miss your chance! (id:6769)



**Rachel Morrison**

Coldwell Banker Horizon Realty

Phone: (250) 280-8070



RE/MAX Kelowna  
100-1553 Harvey Avenue  
Kelowna, BC,  
Canada