

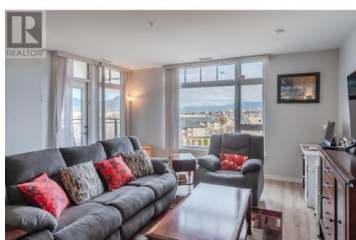
## 3301 SKAHA LAKE Road 608 Penticton British Columbia

Main South

**\$379,000**



Alysen Place - Elevated Living with Stunning Comfort Discover the perfect blend of style and convenience in this sixth-floor 1-bedroom plus den condo, offering 860 sq. ft. of thoughtfully designed living space plus an expansive 110 sq. ft. balcony. Move-in ready and set in a concrete and steel building, this home features geothermal heating and cooling for year-round comfort. The modern chef's kitchen boasts stainless steel appliances, granite countertops, and a spacious island, perfect for entertaining. Enjoy the security and convenience of underground parking, while the strata fee covers heating, cooling, hot water, insurance, and a dedicated caretaker. An ideal choice for those seeking quality, comfort, and a prime location--schedule your viewing today! (id:6769)



### Graeme Veitch

Royal LePage Parkside Rlty Sml

Phone: (250) 462-1757



RE/MAX Kelowna  
100-1553 Harvey Avenue  
Kelowna, BC,  
Canada