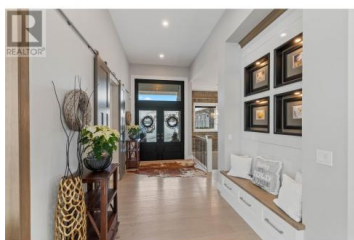




## 608 Mt Ida Crescent Coldstream British Columbia

Mun of Coldstream

**\$2,880,000**



Price Reduction. Court Ordered Sale. Presenting 608 Mt Ida Crescent, situated in Coldstream, British Columbia, in close proximity to Middleton Park, tennis courts, basketball facilities, a playground, and scenic walking trails. Enjoy breathtaking panoramic views of the lake and mountains from the secluded backyard retreat, complete with a pool, hot tub, fire pit, and a designated movie area. Boasting 5400 sq ft., this home offers exceptional entertainment spaces, including an Infrared Sunlighten sauna, massage room, a world-class fitness area, and a theater room for personal luxury. The open kitchen and dining area seamlessly connect to a BBQ island and covered deck, providing an expansive area for both entertaining and everyday living. The built-in S/S appliances also include a built-in Combi Steam Oven, complimenting the gas range, industrial sized fridge, dishwasher and microwave. The elegant living room exudes brightness and warmth, while the residence showcases distinctive cut stone work, a reverse osmosis system, an Environmental Air Filtration System, and a high-end built-in surround system both indoors and outdoors. The garage also features an electric vehicle connection. Additionally, the property is ready for a self-contained in-law suite with a private entrance. Schedule A must accompany any offer. (id:6769)

**Kevin Carswell**

Engel & Volkers Kamloops

Phone: (778) 220-5432



**RE/MAX Kelowna**  
100-1553 Harvey Avenue  
Kelowna, BC,  
Canada

