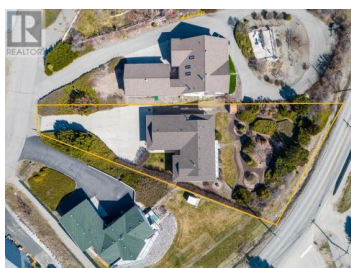




## 6085 Beatrice Road Peachland British Columbia

Peachland

# \$1,049,900



Panoramic lake views from this 4 bed, 3 bath Rancher with suited basement home! Many great features, starting with the .40 acre property. The mature and fully landscaped lot has 8 zone irrigation and offers so much driveway space for vehicles plus it even has RV parking! On the subject of vehicles, this home has an oversized attached garage which is over 930sqft in size! The garage has a natural gas heater and mechanic pit for the car enthusiast. Main floor has 2 bedrooms, the primary bedroom has an ensuite and both lead to the open concept main living space. Modern laminate floors and a bright sun exposure create an inviting atmosphere on both levels of the home. French doors take you to the patio and you will spend hours taking in the panoramic lake views. Kitchen is the original oak hardwood accented with a modern countertop and new appliances. Oversized main floor laundry could be modified to add to the kitchen space if one desired. Down is a 2 bed suite, separate full laundry room and a massive rec room. Would be an ideal in-law suite with no steps and has direct access to the back yard and private patio. Incredibly well maintained and is ready for immediate occupancy, it has a 9 year old roof, 5 year old furnace and a 2 year old hot water tank. Very unique home and packed with features that are hard to find in this price range. Check out the virtual tour in the media t...



**RE/MAX Kelowna**  
 100-1553 Harvey Avenue  
 Kelowna, BC,  
 Canada

**Sascha Heinrich**

Century 21 Assurance Realty Ltd

Phone: (250) 878-5138

