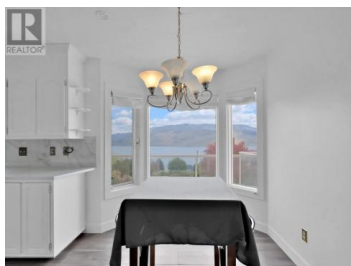
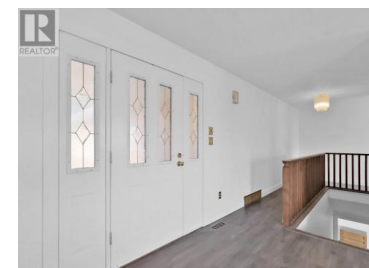




6085 Beatrice Road Peachland British Columbia

Peachland

\$1,079,900



Unmatched Lake Views | Dream Garage | Suite Potential Welcome to your Okanagan escape—a spacious 4 bed, 3 bath Rancher with walk-out basement, perched on a beautifully landscaped 0.40-acre lot with jaw-dropping panoramic lake views from Kelowna to Summerland. This home offers the perfect blend of comfort, function, and opportunity in one of the region's most scenic settings. Step inside to a bright, open-concept main level with 2 bedrooms, modern laminate floors, and a central kitchen with lake views, huge picture windows to soak in the lake views, French doors lead to your private deck—perfect for lounging or dining with a view. Downstairs offers suite potential, with 2 more bedrooms, a full bath, spacious rec room, and walk-out access to the backyard. Great for guests, extended family, or future rental income. And for the car enthusiast—this garage is a showstopper. The oversized 930+ sq ft attached garage features a natural gas heater and mechanic's pit, with room for multiple vehicles or a workshop. Plus, there's RV parking and a large driveway. Peace of mind comes with key updates: NO POLY B., 10-year-old roof, 6-year-old furnace, and 3-year-old hot water tank. The 8-zone irrigation keeps the mature landscaping lush and low-maintenance. Quick possession available. Rarely does a property offer this kind of view, flexibility, and garage space—don't delay get in a se...



RE/MAX Kelowna
100-1553 Harvey Avenue
Kelowna, BC,
Canada

Troy Fischer

Chamberlain Property Group

Phone: (250) 878-0626

