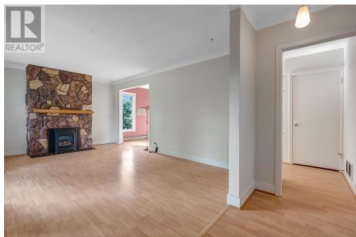




610 Vedette Drive Penticton British Columbia

Husula/West Bench/Sage Mesa

\$850,000



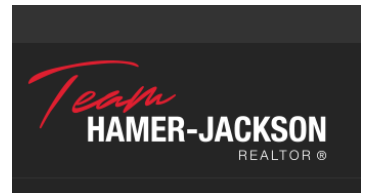
Escape to this private oasis on the West Bench just minutes to downtown Penticton! This 2400 sqft character home sits on a fully fenced .54 acres with inviting white picket fence, mature trees, large pond w/ waterfall and detached double garage. A large family kitchen highlights the main floor with plenty of cupboards and a massive island. Three good sized bedrooms, two bathrooms, dining room, living room and a peaceful sunroom complete the main floor. Lots of room for your car collection/RV with the paved circular drive and double garage plus the multiple storage sheds that help complete this package. A short walk to Mariposa park and KVR trails - call for a tour today. (id:6769)

Shelly Weinrich

Royal LePage Locations West

Phone: (250) 488-4247

<http://www.jeanandshelly.com/>



RE/MAX Kelowna
100-1553 Harvey Avenue
Kelowna, BC,
Canada