

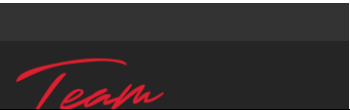


RE/MAX Kelowna
 100-1553 Harvey Avenue
 Kelowna, BC,
 Canada

Visit REALTOR website for additional information. Stunning Slokan Valley mountain views! Sub-Dividable *Potential to develop a farm, vineyard or orchard *Recent major renovations *Brand new custom kitchen *Post & Beam *Vaulted ceilings & skylights *Solid oak cabinets *Stone fireplace *Master en-suite *Potential for a living suite *Workshop & laundry *Detached double car garage *Carport style storage *Covered deck area with stunning views *Covered patio *Landscaped with mature shrubbery & trees *2 fire pits to enjoy *Chicken coop & run (id:6769)

Jonathan David

PG Direct Realty Ltd.



612 ALEXANDER ROAD Nakusp British Columbia

Nakusp Rural

\$810,000