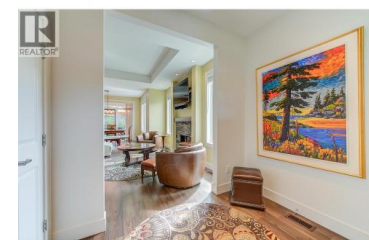




1960 KLO Road 62 Kelowna British Columbia

Springfield/Spall

\$960,000

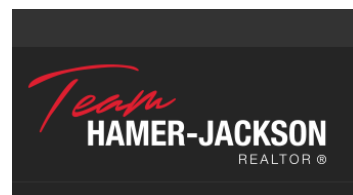


Absolutely immaculate move-in-ready home in the beautiful community of GableCraft in the Mission. Pride of ownership is evident in the like-new condition of this rancher. A corner unit with extra-large backyard and additional privacy fencing makes this backyard an oasis for its new owner. A luxurious Bullfrog hot tub installed in 2021 along with a custom pergola with Lexan roof cover complements the privacy and beauty of the landscaping. Numerous thoughtful upgrades to the home include laminate flooring throughout, custom pantry shelving, laundry room storage, finished garage with ceiling storage racks, comfort-height toilets, extended patio, GE Cafe Appliances, granite countertops, and many more! This 2-bedroom, 2-bathroom executive townhouse is sure to impress! The community of GableCraft is known for its lovely owners, well-run stress-free strata, proximity to Pandosy Village, Mission Creek Golf Club, and all the walking, biking and hiking the Lower Mission offers. Don't miss the opportunity to make this your forever home. (id:6769)

Nehemiah Daehn

RE/MAX Kelowna

Phone: (250) 575-4138



RE/MAX Kelowna
100-1553 Harvey Avenue
Kelowna, BC,
Canada