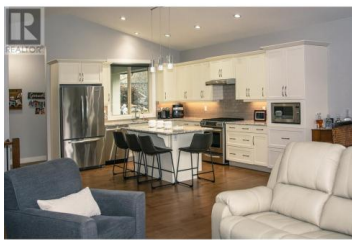


## 6278 Bulyea Avenue Peachland British Columbia

Peachland

# \$1,049,000



This exceptional home boasts a meticulously designed open floor plan, effortlessly blending the living room, dining area, and kitchen to create a welcoming space ideal for entertaining. The kitchen is equipped with high-end stainless steel appliances, sleek quartz countertops, and a gas range. The primary bedroom offers breathtaking lake views and a beautiful en suite with glass shower. The deck invites relaxation with heaters for cool evenings. Additional features include phantom screens, window tinting, irrigation, and BBQ gas hookups at both the front and back. Downstairs has a self contained studio suite with private access on the side of the home. The outdoor space, backing onto a serene orchard, serves as a private oasis with lush greenery, vibrant flowers, and fruit trees, perfect for both intimate moments and larger gatherings. The in-law suite provides privacy with its own entrance, making it an ideal space for guests or extended family. The garage exceeds expectations, featuring an oversized, tandem design that offers ample room for multiple vehicles or abundant storage. It's a meticulously organized, heated space with built-in cabinets, enhanced by durable Flowcrete flooring that combines both functionality and refined style. (id:6769)

**Troy Fischer**

Chamberlain Property Group

Phone: (250) 878-0626



**RE/MAX Kelowna**  
100-1553 Harvey Avenue  
Kelowna, BC,  
Canada

