



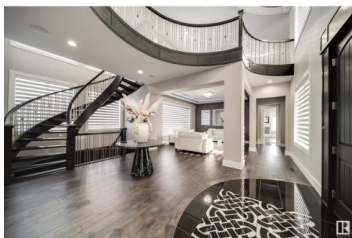
## Rural Sturgeon County Alberta

Pinnacle Ridge Estates

# \$2,800,000



Experience unparalleled luxury in this stunning 10,500 sq. ft. custom-built estate in Pinnacle Ridge, Sturgeon County. Built in 2017, this masterpiece was designed for comfort, elegance, and entertaining. Boasts 9 bedrooms (7 above grade), 7 full baths, and 2 half baths, perfect for multi-generational living. The 6-car attached garage offers ample space for your vehicle collection and storage with access directly to your basement. Entertain effortlessly with a state-of-the-art theatre room, private gym, and gourmet kitchen featuring top-tier appliances and a separate butler/spice kitchen. Grand living areas with impeccable craftsmanship, soaring ceilings, and premium finishes define this home. Unparalleled layout make this estate a rare find sitting on .51 acres of fully landscaped land conveniently in a cul de sac with excellent views. Nestled in one of Alberta's most prestigious communities, this residence is a true statement of design, elegance and comfort. (id:6769)



### Sergio Maione

RE/MAX Elite

Phone: (780) 231-7863

<https://www.sergiosells.ca/>



RE/MAX Kelowna  
100-1553 Harvey Avenue  
Kelowna, BC,  
Canada