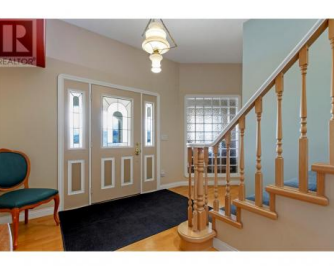




633 Middleton Way Coldstream British Columbia

Middleton Mountain Coldstream

\$1,150,000



Seller financing (below bank rates) can help you immediately move into this 4 Bedrm executive residence on Middleton Mtn in Coldstream BC, where you can work from home in a beautiful setting that is easy for your clients to find. Turquoise Kalamalka Lake is nestled in a valley surrounded by mountains, orchards, & vineyards that make it the prettiest lake in the Okanagan. Your home office has a picture window looking at Kal Lake & take breaks on your upper level full length covered balcony. Up the curved staircase you have spacious living areas, with 2 gas fireplaces, dining rm, open kitchen with eating area, 2 bedrms, including a large primary suite, 5 piece ensuite complete with jetted tub & an amazing walk-in closet with cherry wood drawers & doors. The ground level provides 2 more bedrms, office & family rm, laundry, full bathrm & newly improved central air conditioning. This backyard provides a peaceful retreat among grapevines & colourful gardens that bloom differently spring through fall adjacent a Tiki bar perfect for BBQs & relaxation in a fully fenced puppy friendly backyard. A bright 2 car garage & plenty of outside parking. Traveling is easy, only 30 minutes to YLW International Airport. This home is an easy walk up to Middleton Mtn Trail. Just 2 minutes down to:Kal Lake Provincial Park, the Okanagan Rail Trail for biking, walking in local parks, beaches, paddle b...



RE/MAX Kelowna
 100-1553 Harvey Avenue
 Kelowna, BC,
 Canada

Dan Reinhardt
 Royal LePage Downtown Realty
 Phone: (250) 309-9111
<http://www.danreinhardt.ca/>

