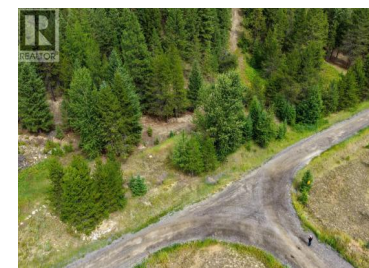
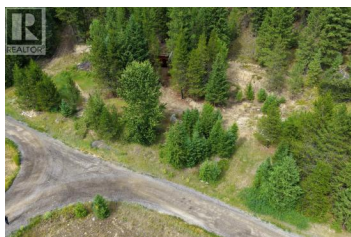




6350 Highway 33 Highway Beaverdell British Columbia

Beaverdell/Carmi

\$99,000



Princess Hills is a cooperative development where land and assets are collectively owned and managed by shareholders through an elected board—offering a unique alternative to traditional property ownership. This share (#18) grants exclusive use of a surveyed 2.7-acre lot and includes a 1/24th ownership in the overall property. The lot features a level area near the western entrance with a driveway and two storage sheds. The land rises through a fir and pine forest to a potential upper building site. Residents enjoy a peaceful, like-minded community with simple, affordable living. While unzoned, the shareholders agreement allows one residence, outbuildings, and some animals per share. Full details are available upon request. (id:6769)

Robert Armstrong

LandQuest Realty Corp. (Interior)

Phone: (250) 307-6457



RE/MAX Kelowna
100-1553 Harvey Avenue
Kelowna, BC,
Canada