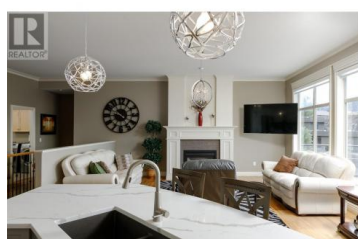




## 636 Spruceview Place Kelowna British Columbia

Glenmore

**\$1,225,000**

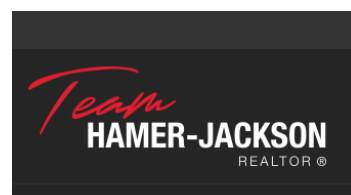


Welcome to this beautifully maintained 4-bedroom, 3-bath walk-out rancher offering over 2,550 sq ft of comfortable living space in a quiet, desirable Glenmore neighborhood. This spacious home features a bright, open layout with main floor living, with an updated kitchen and appliances. Fresh interior and exterior paint give the home a clean, refreshed feel, while large windows throughout capture stunning city and mountain views. The walk-out basement provides flexible living options—ideal for guests, a home office, or multigenerational living. Additional highlights include central vacuum, underground sprinklers, double car garage, and meticulous upkeep throughout. With great curb appeal, a functional layout, and a prime location close to amenities, parks, breweries, beaches and schools, this home is truly move-in ready and waiting for its next chapter. Book your showing today ! (id:6769)

### Brandi Lazic

Engel & Volkers Okanagan

Phone: (250) 317-0699



RE/MAX Kelowna  
100-1553 Harvey Avenue  
Kelowna, BC,  
Canada