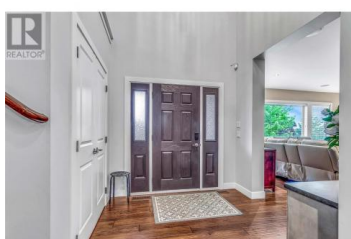




638 Long Ridge Drive Kelowna British Columbia

Wilden

\$1,299,000



Perched on a large private lot overlooking Still Pond in the fantastic neighbourhood of Wilden, this Eco-friendly family home boasts all of the "extras" including hot water on demand, 3 zone Geoexchange System, tile roof and low-emittance windows as well as a lovely low-maintenance, drought resistant yard. Fantastic spacious layout with bright and open main floor with wall to wall hand scraped oak floors, custom fireplace and high ceilings. The island kitchen opens to a large deck with stunning views of Still Pond and the surrounding park. The second floor consists of a large primary suite with spacious ensuite and Juliette balcony as well as another bedroom and full bathroom as well as an open area perfect as a cozy reading or study nook. The walk-out basement has suite potential or is the perfect teenager retreat with two bedrooms, a full bathroom and a huge recreation area. The patio off the lower level offers more views of Still Pond and has a private hot tub with pergola and cozy sitting area - all in a secluded wilderness setting. Hiking trails are just below the property. Oversized garage and huge driveway. (id:6769)

Maureen Yakimchuk

Century 21 Assurance Realty Ltd

Phone: (250) 870-2510

<https://maureen-yakimchuk.c21.ca/>



RE/MAX Kelowna
100-1553 Harvey Avenue
Kelowna, BC,
Canada