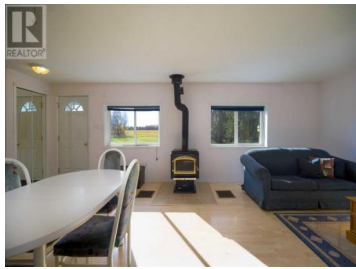




**641025 Range Road 213 Rural Athabasca County Alberta**

**\$349,900**

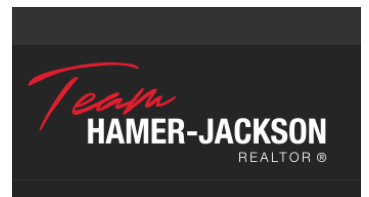


Nestled on 160 acres of land, this charming 1-bedroom, 1-bathroom bungalow offers the ultimate retreat for those seeking peace and solitude. It is the perfect haven for a single person or couple looking to escape the hustle and bustle. The property features a large pond, serene pasture areas, and many trees, inviting you to embrace nature at its finest. Numerous outbuildings provide endless opportunities for a hobby farm, storage, or recreational use. Whether you're into farming, hiking, birdwatching, or simply unwinding, this property delivers abundant tranquility. Adjacent to Crownland it would also be a great recreational property. Located approximately 15 min from Athabasca or Boyle, you can enjoy either community's blend of outdoor adventures and urban amenities, from scenic river trails to local shops and services, making this an ideal place to get away. (id:6769)

**SHAHIRA BURY**

ROYAL LEPAGE COUNTY REALTY

Phone: (780) 675-0800



RE/MAX Kelowna  
100-1553 Harvey Avenue  
Kelowna, BC,  
Canada