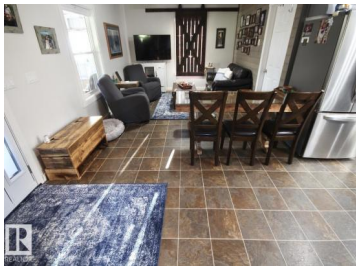




Rural Athabasca County Alberta

None

\$319,900



WESOME AFFORDABLE ACREAGE! With over 14 acres the property is perfect for the first time home buyer, hobby farmers, down-sizers, or anyone looking to escape town or the city! The yard nicely private with lots of mature trees and has the perfect area for gathering around the fire! With all the space you could build your dream shop, park the RV's/Toys or just relax and enjoy having your own private space! The 1.5 storey home itself has loads to offer with over 1200 sqft of living space, modern open concept, 10FT CEILINGS!, 2 large bedrooms, 1 full bathroom, massive deck with hot tub, enclosed porch, reverse osmosis, hot water on demand and so much more! Located almost half way between Edmonton and Fort McMurray and only 5 minutes to Boyle this acreage gives the perfect mix of privacy and proximity! Don't miss out! (id:6769)

Keith B. Madsen

MaxWell Progressive

Phone: (780) 934-2667

<http://www.keithmadsengroup.com/>



RE/MAX Kelowna
100-1553 Harvey Avenue
Kelowna, BC,
Canada