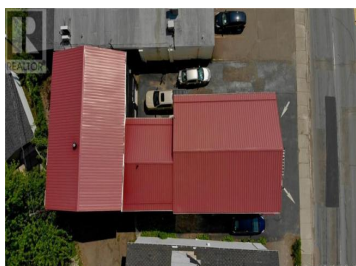




New Brunswick Real Estate Board



Location meets opportunity! Welcome to 647 Mountain RD. Storefront with workshop & warehouse! Opportunity to take over a well established business or begin your next commercial investment. The main building has a separate entrance to the top floor where. 20x40 Warehouse has 3 levels and a garage door access. For more information reach out to your REALTOR(R). (id:6769)

Thomas O'Neil

RE/MAX Quality Real Estate Inc.

Phone: (506) 229-9596





RE/MAX Kelowna
100-1553 Harvey Avenue
Kelowna, BC,
Canada