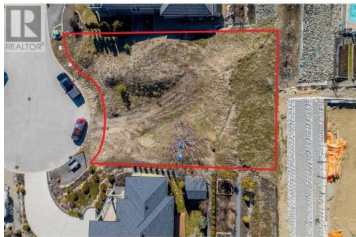




## 6486 Sherburn Road Peachland British Columbia

Peachland

# \$439,900



You will be amazed at the beautiful lake and mountain views from this quiet cul-de-sac lot in scenic Peachland. If peace and tranquility is what you are looking for, this is a prime location to build your home and enjoy being surrounded by newer homes in a family friendly neighbourhood. Services are conveniently located at this lot line. The location offers easy access to the highway south to Vancouver and north to Kelowna Airport. The Okanagan Valley is famous for its outdoor activities including skiing, boating, hiking, snowmobiling and its great selection of wineries and restaurants. Don't miss out on this fabulous lot and a new life in the Central Okanagan and all it has to offer. (id:6769)

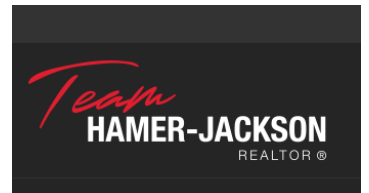
**Dulcie Sharpe**

RE/MAX Kelowna

Phone: (250) 300-0315

<https://www.centralokanaganhomes>

.ca/



RE/MAX Kelowna  
100-1553 Harvey Avenue  
Kelowna, BC,  
Canada