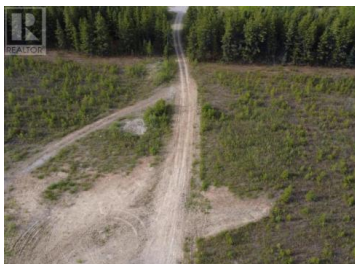




**Watson Lake Yukon**

**\$79,000**

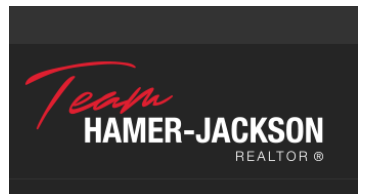


Located just 40 km east of Watson Lake, this 8.26-acre (600' x 600') parcel offers an excellent opportunity for commercial or residential use. The land is cleared, level, and provides direct highway access, making it ideal for a wide range of business operations—from logistics and storage to service-based industries. With high visibility and convenient access along a major route, this property is perfectly positioned for those looking to expand or establish a commercial presence in the region. Rare to find cleared commercial land of this size with such great access—don't miss out! (id:6769)

**Spencer Bergen**

COLDWELL BANKER REDWOOD REALTY

Phone: (867) 335-1716



**RE/MAX Kelowna**  
100-1553 Harvey Avenue  
Kelowna, BC,  
Canada