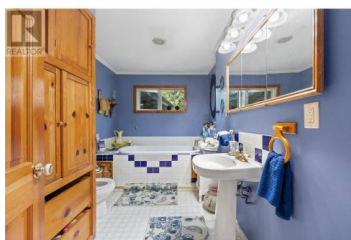


6580 33 Highway Beaverdell British Columbia

Beaverdell/Carmi

\$595,000



Riverfront Rancher on 4.8 Acres in Carmi - Your Outdoor Paradise Awaits Assessed at \$771000! Discover this charming 4.8-acre rancher nestled in the serene Carmi area, just 7 minutes from Beaverdell and under an hour to Kelowna. Set back from the road and shaded by mature trees, this private retreat backs onto the Kettle River, offering your own secluded sandy beach--ideal for peaceful mornings or summer swims. The flat, fully usable land is perfect for horses, pets, or a hobby farm, featuring several outbuildings, a detached 2-car garage, private well, and ample power. High above the water table, the home enjoys peace of mind while offering direct access to the river via a private laneway. Outdoor enthusiasts will appreciate the proximity to numerous trails and parks. The Kettle Valley Railway / Trans Canada Trail is nearby, offering cycling and hiking opportunities with stunning views of the West Kettle River . For hiking and snowshoeing, the Carmi Loop and Upper Carmi Winter Trail provide scenic routes through the forest . Additionally, Far Meadow offers a 3.5-mile loop trail near Beaverdell Lake, great for biking and hiking. Whether you're into fishing, hiking, dirt biking, quading, sledding, or snowshoeing, adventure is at your doorstep with Big White only 35 minutes away. This is a rare opportunity to embrace true country living, surrounded by nature's beauty and God's ...



RE/MAX Kelowna
100-1553 Harvey Avenue
Kelowna, BC,
Canada

Stu Morgan

RE/MAX Kelowna

Phone: (250) 575-5870

