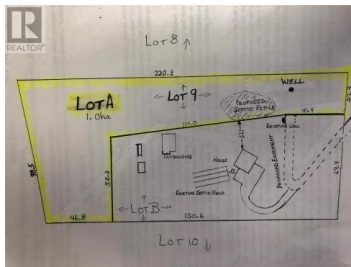


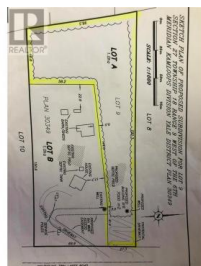
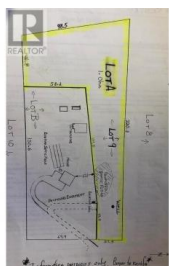
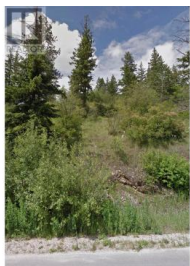
## 66 Twin Lakes Road Enderby British Columbia

Enderby / Grindrod

**\$249,000**



2.55 acres on the west hillside, offering views of the Enderby Cliffs, valley, and city below. Enderby borders the picturesque Shuswap River, . Centrally located, this property provides easy access to a variety of recreational areas and lakes, including Mara and Shuswap, Hunters Range, golf courses, and vineyards and the renowned Rail Trail, making it a hub for outdoor enthusiasts The area is known for family homes on small acreages, creating a welcoming community atmosphere. Accessible via paved roads, this 2.55-acre plot boasts a drilled well with a strong flow rate of 5 GPM, ensuring reliable water access. Build your dream home just minutes away from shopping, schools, and recreational facilities. The property offers a registered easement via a shared driveway or the option to develop another driveway, providing flexibility in access and development. Zoned as Small Holdings and is NOT in the ALR, this property presents an exciting development opportunity. Don't miss out call today to book a tour. Appointments are a must! (id:6769)

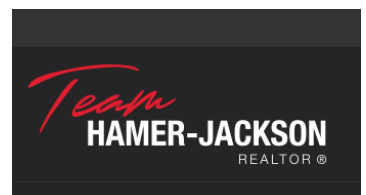


### Cory Bialecki

RE/MAX Vernon

Phone: (250) 550-7135

<https://bialecki.ca/>



**RE/MAX Kelowna**  
 100-1553 Harvey Avenue  
 Kelowna, BC,  
 Canada