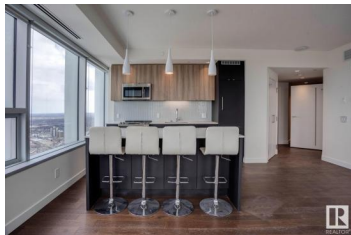


## Edmonton Alberta

Downtown (Edmonton)

**\$649,900**



PENTHOUSE UNIT IN WESTERN CANADA'S TALLEST BUILDING! Live in Luxury at SKY Residences, located in the heart of the vibrant Ice District. This stylish 868 sqft, 2 bed/2 bath has so much to offer.....premium finishing, quartz counters, hardwood/tile throughout, floor to ceiling windows, patio, panoramic views of the City, in-suite laundry, TWO TITLED underground parking stalls, and more. This unparalleled complex offers the best in exceptional amenities: access to JW Marriott services, personal concierge service, access to the 30th floor that includes indoor/outdoor social/recreation centre, party room/kitchen, golf simulator, fitness centre, fireplaces, hot tub, BBQ areas, and more. Indoor access to Rogers Place, steps to great shopping and fine dining, and direct connection to the downtown pedway and LRT systems. Live the good life in Edmonton's downtown core! (id:6769)

**Ryan R. Lauber**

RE/MAX Elite

Phone: (780) 717-4861

<http://ryanlauber.com/>



RE/MAX Kelowna  
100-1553 Harvey Avenue  
Kelowna, BC,  
Canada