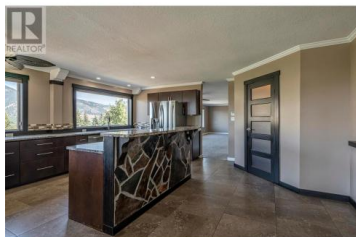




## 6660 Brewer Road Coldstream British Columbia

Lavington

**\$1,189,000**



Your Dream Property Awaits: Spacious Home, Workshop, and 6.2 Acres of Possibilities Discover the perfect blend of space, comfort, and versatility in this incredible 3,200 sqft rancher on a basement, just minutes from town. Nestled on 6.2 serene acres, this home offers a 2-bedroom in-law suite (or extra family space), a stunning upstairs kitchen with ample counter space, huge windows showcasing breathtaking views, and heated floors for cozy mornings. The updates don't stop there--step into the eye-catching renovated bathroom, a true showstopper! For the hobbyist or handyman, the property boasts 1,000 sqft of attached garage, plus a 2728 sq ft detached building with another 951 sq ft shop with 14' high ceilings, a man cave/office, 330 sq ft storage room, a 288 sq ft single-bay garage with a roll-up door, and a fully self-contained upstairs one bedroom apartment. Need more space? A double-length carport and room for your RV or boat complete the package. Whether you're building hot rods, hosting game nights, or simply enjoying the semi-rural lifestyle, this property has it all. Live life to the fullest--this is the home you've been waiting for! (id:6769)

### John Deak

Royal LePage Downtown Realty

Phone: (250) 549-9022

<http://www.johndeak.com/>



RE/MAX Kelowna  
100-1553 Harvey Avenue  
Kelowna, BC,  
Canada

