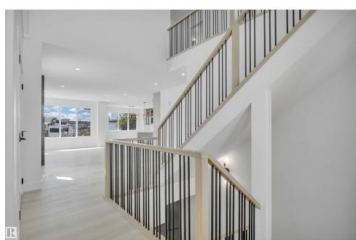
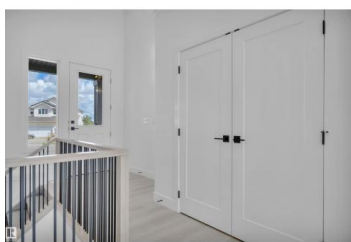




Leduc Alberta

Meadowview Park_LEDU

\$599,900



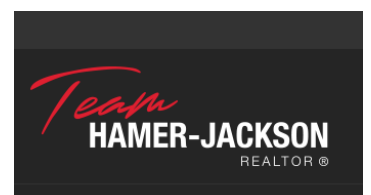
OVERSIZED 24' DEEP GARAGE! GORGEOUS FINISHES! CORNER LOT! IMMEDIATE POSSESSION! Searching for a new build with character? Quality finishes? Room to park the truck? This 2438 sq ft 3 bed + den, 2.5 bath home is loaded with upgrades! Feat: 9' ceilings on all 3 floors, vinyl plank flooring, 8' garage doors, electric fireplace w/ floor to ceiling tile, pot lighting, metal spindles, quartz countertops throughout, tray ceilings, mdf shelving & more! Unique open concept main floor with stunning kitchen, tons of cabinets, walk-through pantry, main floor den & large windows for natural light. Upstairs brings the massive bonus room for movie night, 3 huge bedrooms including the primary bed w/ beautiful 5 pce ensuite & walk in closet, laundry room, & 4 pce bath. Unfinished basement, but 3 windows to allow for 2 more bedrooms & rec room! Located steps to walking trails, quick access to schools & parks, & room to add your deck & landscaping for summer fun *Some photos virtually staged / landscaped* (id:6769)

Kevin B. Doyle

RE/MAX Elite

Phone: (780) 314-8001

<http://kevindoyle.remax.ca/>



RE/MAX Kelowna
100-1553 Harvey Avenue
Kelowna, BC,
Canada