



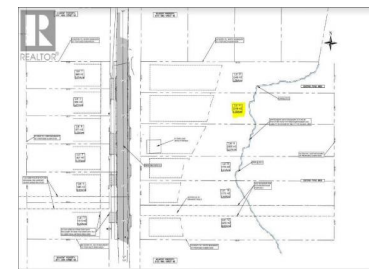
6820 46 Street Salmon Arm British Columbia

NE Salmon Arm

\$219,900



Lines are approximate



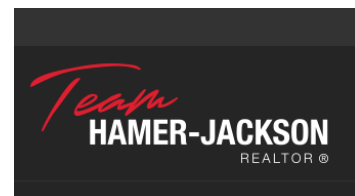
GST INCLUDED!! Nestled in the serene Southwest corner of Canoe, at the end of a quiet dead-end road this 0.55-acre lot is situated in the TURTLE RIDGE subdivision of Salmon Arm NE. The property is fully serviced, featuring an impressive 58 feet of frontage and 410 feet of depth. The eastern side of the lot backs onto Canoe pond and park area, creating a peaceful atmosphere. Geotechnical and RAR report already done and available. There is no building scheme, only compliance with the City of Salmon Arm code requirements. Conveniently, the property is within walking distance to both the school, Canoe Beach, and the waterfront park on Shuswap Lake. Don't miss the opportunity to own a piece of this desirable location! (id:6769)

Armin Hosseini

Homelife Salmon Arm Realty.Com

Phone: (250) 200-7355

<http://www.hosseiniteam.ca/>



RE/MAX Kelowna
100-1553 Harvey Avenue
Kelowna, BC,
Canada