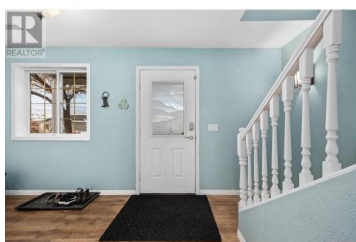


4450 Postill Drive 7 Kelowna British Columbia

Ellison

\$749,700



Welcome to Country Rhodes, a family-friendly neighborhood nestled on the peaceful benchlands off Postill Road. This sought-after community offers fantastic amenities, including an outdoor pool, playground, community center, and secure RV/trailer parking for residents. The location is exceptional, with Ellison Elementary just minutes away and quick access to Mill Creek's scenic walking paths, shopping, restaurants, and Kelowna International Airport. With low strata fees of \$165/month (including water/sewer), this home strikes the perfect balance of comfort, convenience, and community. This beautifully maintained 3-bedroom, 3-bathroom home is move-in ready and filled with thoughtful features. The primary suite boasts a walk-in closet, private ensuite, and a unique laundry chute for added convenience. Two additional bedrooms and a cozy family room complete the main floor. Downstairs, the spacious basement features a large recreation room, roughed-in for a wet bar or kitchen suite, and a full bathroom, offering flexibility for families or entertaining guests. The private, fenced backyard is designed for low-maintenance living, while the covered deck provides a tranquil space to enjoy morning coffee or evening gatherings. Don't miss the opportunity to make this incredible property your own--schedule a viewing today! (id:6769)

Andrew Newton

Royal LePage Kelowna

Phone: (250) 469-2055

<http://andrewnewton.ca/>



RE/MAX Kelowna
 100-1553 Harvey Avenue
 Kelowna, BC,
 Canada

