

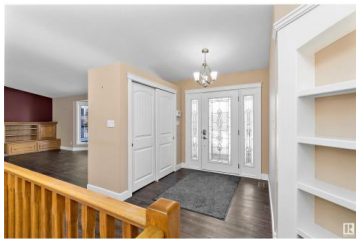
Rural Leduc County Alberta

Treasure Island Estate

\$1,099,000



Lovely 2121 sq, ft, BUNGALOW on 6.77 PRIVATE, MANICURED & GATED ACRES, with a circular drive to the 6 CAR GARAGE with INFLOOR HEAT & MEZZANINE or 27' x 60' HEATED SHOP that ACCOMODATES A BUS or TWO! This ONE OWNER HOME has been UPDATED & UPGRADED & features a VERANDAH leading to the OPEN CONCEPT LAYOUT featuring a spacious living room with BUILT IN WALL UNIT, FIREPLACE & VINYL PLANK flooring. The dining room overlooks the STUNNING SUN ROOM with VAULTED CEILINGS, WOOD BEAMS & FIREPLACE. The sunny ISLAND KITCHEN offers newer STAINLESS APPLIANCES a walk in pantry & rich QUARTZ COUNTERS! Central foyer, the primary suite offers a 4 pc. plus there's a 4 pc. & 2 pc baths, bed/den & super laundry & storage spaces. Down to 3 bedrooms, a 3 pc. bath, INFLOOR HEAT & space for a family room! Great COMPOSITE deck with BBQ gas line off the SUN ROOM, PATIOS, GAZEBO WITH FIREPLACE, BLACK CHAIN LINK fencing around the POND, MATURE TREES & LOW MAINTENANCE YARD. AC, ACRYLIC STUCCO, SECURITY, 50 YR SHINGLES, WELL,CISTERN! (id:6769)



Mona C. LaHaie

RE/MAX Elite

Phone: (780) 850-0800

<http://www.horsepowerranch.com/>



RE/MAX Kelowna
 100-1553 Harvey Avenue
 Kelowna, BC,
 Canada

