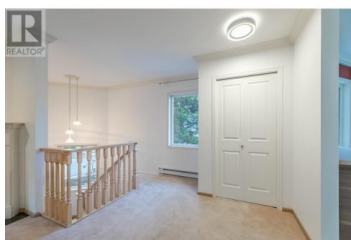


8907 PINEO Court 70 Summerland British Columbia

Main Town

\$445,000



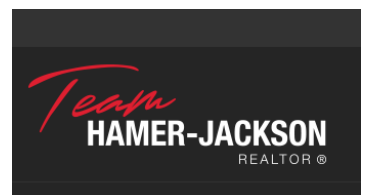
Spacious townhome located in Linden Estates available, with your own private walk-up entrance . This freshly painted top floor corner unit boasts 1725 sq ft and features 2 bedrooms + den and 2 spacious bathrooms. The large master bedroom has an en-suite with a larger walk-in closet. Take advantage of this spacious floor plan. The home has plenty of natural light through the large windows located on the main level. Enjoy the cozy gas fireplace located in the living room. On the sunny days you can sit on your private large enclosed deck. The home comes with a walk in shower, newer flooring, updated kitchen with counter top & back splash, paint, induction stove, dishwasher, new washer and dryer with a utility room for additional storage. Centrally located close to shopping and town. This 55+ PET FRIENDLY adult complex has a well managed. Strata monthly fee \$350.72. Includes covered carport parking for one with attached storage room, plus guest parking in front of the home and additional RV parking available upon request. (id:6769)

Lori J. Lancaster

Parker Real Estate

Phone: (250) 488-9554

<http://www.lorilancaster.com/>



RE/MAX Kelowna
100-1553 Harvey Avenue
Kelowna, BC,
Canada