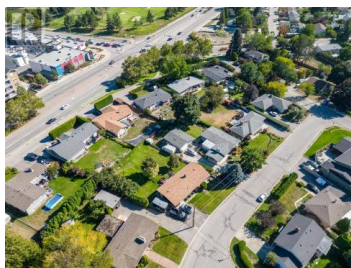
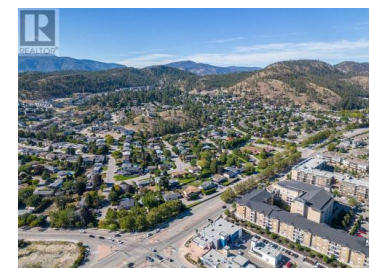
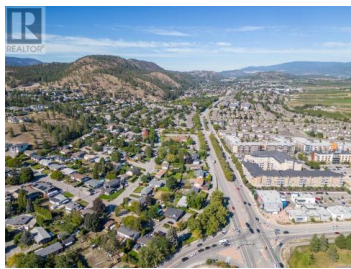


702 Glenmore Drive Kelowna British Columbia

Glenmore

\$2,020,000

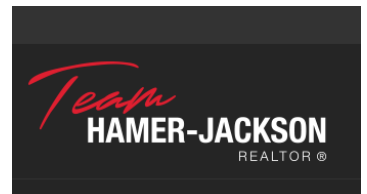


Exciting development opportunity! Prime location in old Glenmore. Positioned on a transportation corridor with easy access to downtown Kelowna, UBCO campus and Kelowna International airport. Potential is available for rezoning to MF3, allowing up to 6 stories residential with various commercial uses permitted. Walking distance to elementary and middle schools, amenities, Knox mountain and Dilworth hiking trails, Kelowna Golf and Country Club and on city biking routes. Further attractions are the stunning views of Knox mountain, Dilworth cliffs and views of Lake Okanagan. (id:6769)

Dustin Herbison

Real Broker B.C. Ltd

Phone: (778) 838-4372



RE/MAX Kelowna
100-1553 Harvey Avenue
Kelowna, BC,
Canada